

Data Sheet

Type Number 6205
Designation IEC CR 17345
System Li-Manganese dioxide / Organic Electrolyte

UL Recognition..... MH 13654 (N)
Nominal Voltage 3 V
Typical Capacity C 1550 mAh
 Load 100 Ohm, at 20°C down to 2 V

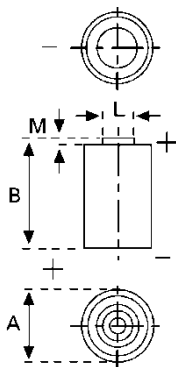
Weight (approx.) 17 g
Volume 7 ccm
Coding..... Date of Manufacturing Month / Year

Temperature Ranges

	min	max.
Storage	-20°C	45°C
Discharge	-40°C	70°C*

Dimensions

	min	max.
Diameter (A)	16,40	17,00
Height (B)	34,30	34,50
Shoulder Diameter[L].....	6,20	6,40
Shoulder Height [M].....	1,18	1,23


Typical Capacities (at 20°C)

Discharge Type	Load	End Voltage:	2.0 V
Continuous 24h/d,7d/w	100 Ω	Capacity [mAh]:	1550

* Contact VARTA if the application is intended to be outside the range of -20°C to +60°C.

*Information and contents in this data sheet are for reference purpose only.
 They do not constitute any warranty or representation and are subject to change without notice.
 For most current information and further details, please contact your VARTA representative.*

VARTA Microbattery GmbH, Daimlerstr. 1, D-73479 Ellwangen/Jagst
 Tel.: (+49) 7961/921-0, Telefax: (+49) 7961/921-553
 Date of issue: 2014-09-16

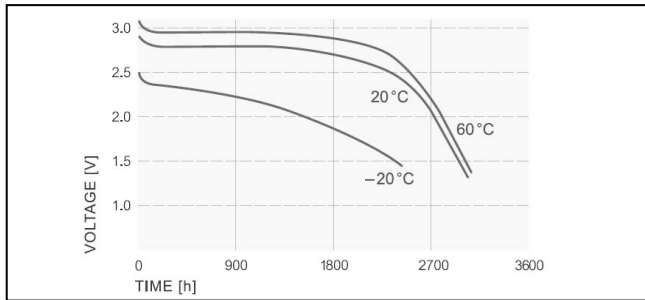
Subject to change without prior notice!

Contactez-nous sur admin@mega-piles.com

Data Sheet

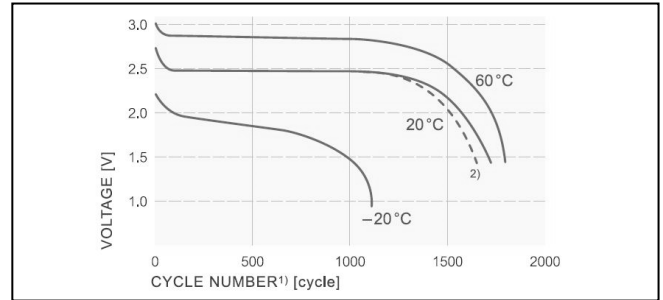
Performance Data:

• **Temperature Characteristics***



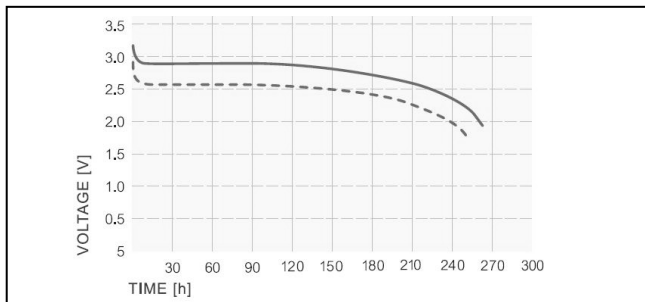
*Discharge Load 5.6 k Ω

• **Pulse discharge characteristics***



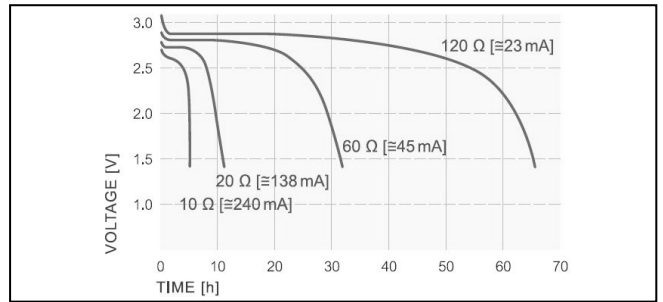
* 1) Load: 0.9A, 3 sec on, 27 sec. off 2) after storage at 60°C/100 days

• **Typical discharge curve***



* Load: cont. 560 Ω , Pulse load: 2.sec/min 3 Ω (parallel)

• **Discharge Characteristics***



* at room temperature 21°C

- Self-discharge rate < 1% at room temperature
- Storage life > 10 years
- Operating life* > 10 years

* depending on environmental condition and energy consumption

*Information and contents in this data sheet are for reference purpose only.
They do not constitute any warranty or representation and are subject to change without notice.
For most current information and further details, please contact your VARTA representative.*