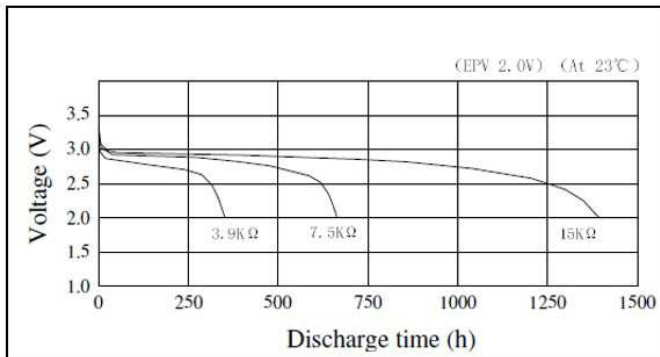


Description : Flat Lithium Battery
Chemical system : Lithium Manganese Dioxide
Nominal voltage : 3 Volts
Nominal capacity : 260mAh
Dimensions : Ø23mm x 3.0mm
Shelf life : 10 years at room temperature
Average weight : 4.0 grams
Operation temperature : -20°C ~60°C
Storage temperature : 20 ± 2°C

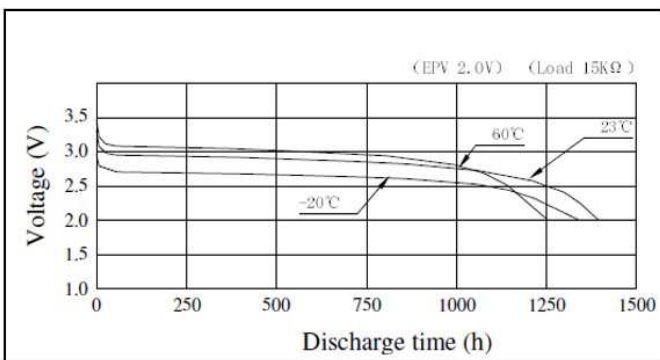
Cross References:

IEC	JIS	Panasonic
CR2330	N/A	CR2330

Discharge Characteristics



Discharge Characteristics on Temperature

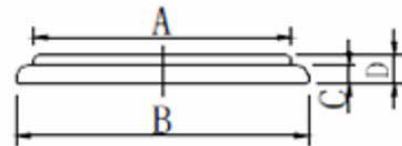


gpbatteries.com

Manufacturer reserves the right to alter or amend the design, model and specification with out prior notice.
 Copyright© GPI International Ltd. - All rights reserved

Model No.: **CR2330**

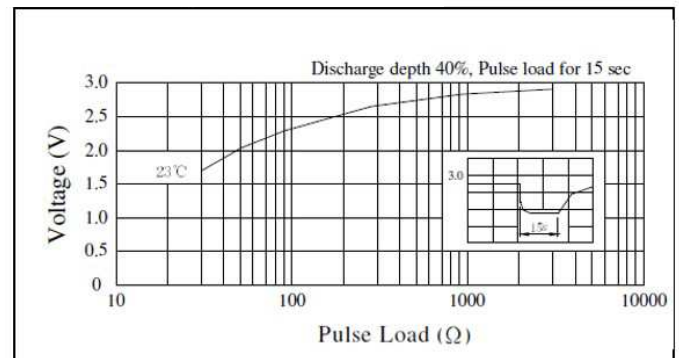
Dimensions (mm)



A	Ø20.3
B	Ø23.0 ^{+0.0} _{-0.3}
C	2.36 (Ref.)
D	3.0 ^{+0.0} _{-0.3}

Dimension Drawing

Pulse discharge characteristics



The information (subject to change without prior notice) contained in this document is for reference only and should not be used as a basis for product guarantee or warranty. For applications other than those described here, please consult your nearest GP Sales and Marketing Office or Distributors.